



**Rizvi Education Society's
RIZVI COLLEGE OF EDUCATION
Khar West**

PLACEMENT CELL – ANNUAL REPORT 2021-22

The College Placement cell is an integral part of the college activities. The main responsibility of the cell is to place the right candidate at the right organization. The cell identifies the qualities, preferences, talents and traits of the student teachers which help during the time of placement. The cell organizes activities concerning career planning and acts as a bridge between students, alumni and employers.

The composition of the Placement Cell for academic Year 2021-22

Chairperson –Mrs. Nahida Mandviwala

Placement Co-ordinators –Mrs. Spoty Karthik & Ms. Surekha Chidambaranath

1. Personal Grooming; Interview skills & CV writing training

The Cell conducted different sessions for training in resume and CV writing; personal grooming and communication & Interview preparation.

2. Mock interview The Placement cell as part of the placement process conducted mock interview of all the student teachers on 22nd January, 2022. The mock interview covered areas of their General knowledge and pedagogical knowledge; CV and resume writing skills; communication skills and personal presentation. After the interview suggestions and feedback was given to the student teachers.

3. Career Counselling Session

The Placement cell & Alumni association of Rizvi College of Education jointly organized a career counseling on the topic 'Teaching Abroad as a Profession' on 12th February, 2022. Mr.Zubin Irani, an alumnus of the college who is a teacher in New Zealand, was the speaker. Mr. Irani is Assistant Head of Mathematics in Lynfield College New Zealand. Mr. Irani gave a comprehensive picture of the profession of teaching in New Zealand covering the following areas


- Teaching as a profession in New Zealand: Opportunities and Scope
- Life of a teacher
- Challenges faced when teaching abroad


- Curriculum & Pedagogy: How it is different from India?
- Teaching during pandemic- E-learning.


**RIZVI EDUCATION SOCIETY'S
RIZVI COLLEGE OF EDUCATION**
(Affiliated To University Of Mumbai)

Placement Cell and Co-Ed Alumni Association organizes
Career Guidance Talk

CHIEF PATRONS

 **Dr. Akhtar Hasan Rizvi**
President
Rizvi Education Society

 **Adv. Mrs. Rubina A. H. Rizvi**
Director
Rizvi Education Society

 **Mr. Zubin Irani**
Assistant head of Mathematics
Lynfield College,
Auckland, New Zealand

Topics of discussion:

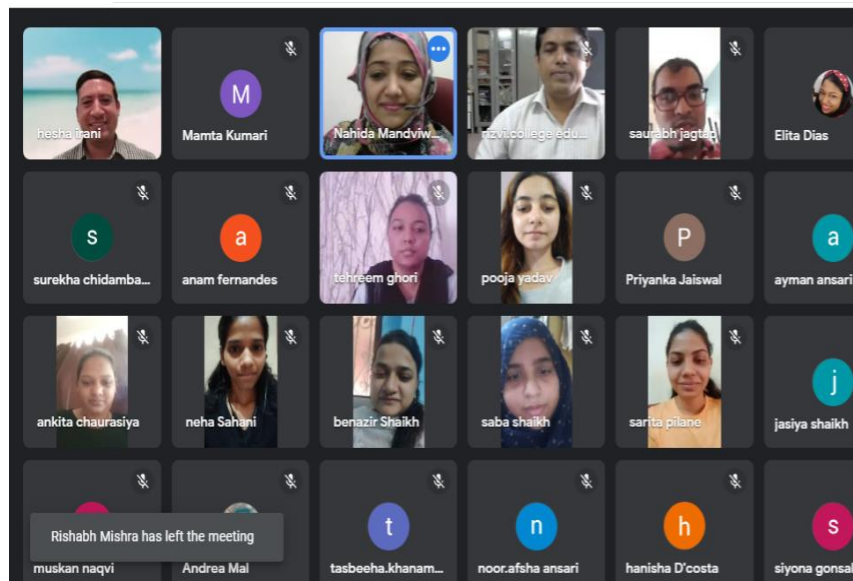
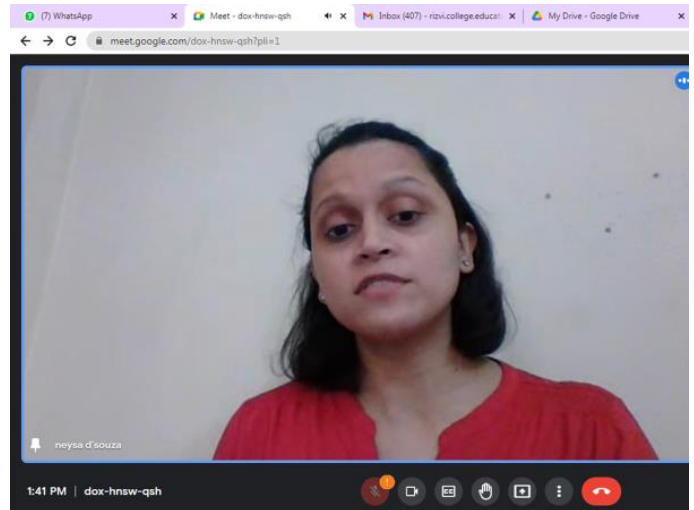
- Teaching as a profession in New Zealand: Opportunities and Scope
 - Life of a teacher
 - Challenges faced when teaching abroad
- Curriculum & Pedagogy: How it is different from India?
 - Teaching during pandemic Elearning

Date: 12th February 2022 from 12 noon to 1p.m.
Google Meet code: [dox-hnsw-qsh](https://meet.google.com/dox-hnsw-qsh)

I/C Principal
Mrs. Nahida Mandviwala

Placement Coordinators
Mrs. Spoty Karthik
Ms. Surekha Chidambaranath

Organising Committee
Dr. Gyanprakash Arya
Dr. Priyanka Pandey



3. Placement Drive

The placement drive for academic year 2020-21 was conducted from 28th & 29th January, 2022 in the online mode. College invited several schools, colleges, NGOs & Ed Tech companies to participate in the drive. Some institutions conducted a Pre-placement orientation session with the student teachers. The list of institutions which participated in the drive is presented below.

1. Aseema Charitable Trust
2. The Akansha Foundation
3. Arya Vidya Mandir
4. Kaiser College of Commerce
5. Rizvi Spring Field High School (CBSE)
6. Rizvi Spring Field High School (SSC)
7. Nahar International school
8. Oberoi International
9. Orchids International
10. Vidya Vihar English school

A group of students were selected in the placement process. Further, the college shared information about the vacancies available in different schools and college, whenever we received it. The students were given reference and recommendation letters whenever required.



Mrs. Nahida Mandviwala
Principal I/C

Mrs. Spoty Karthik
Co-ordinator